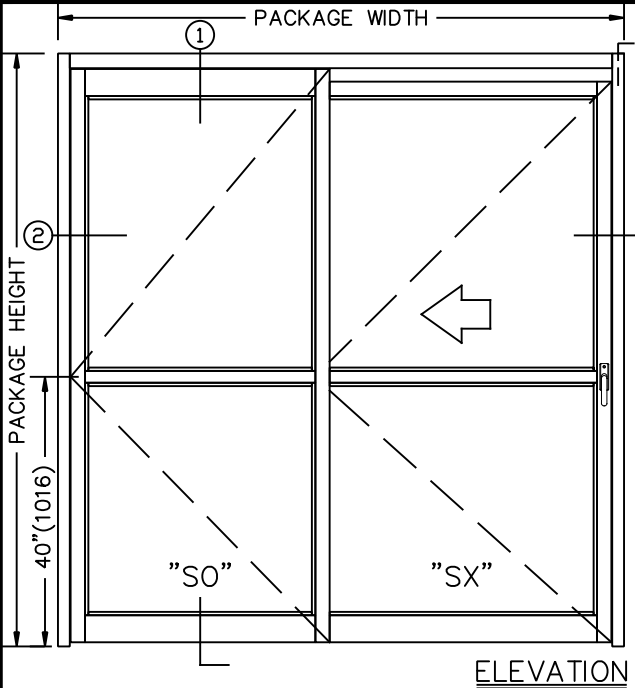
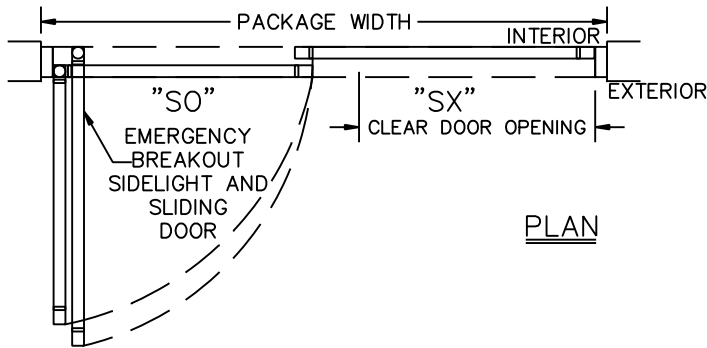
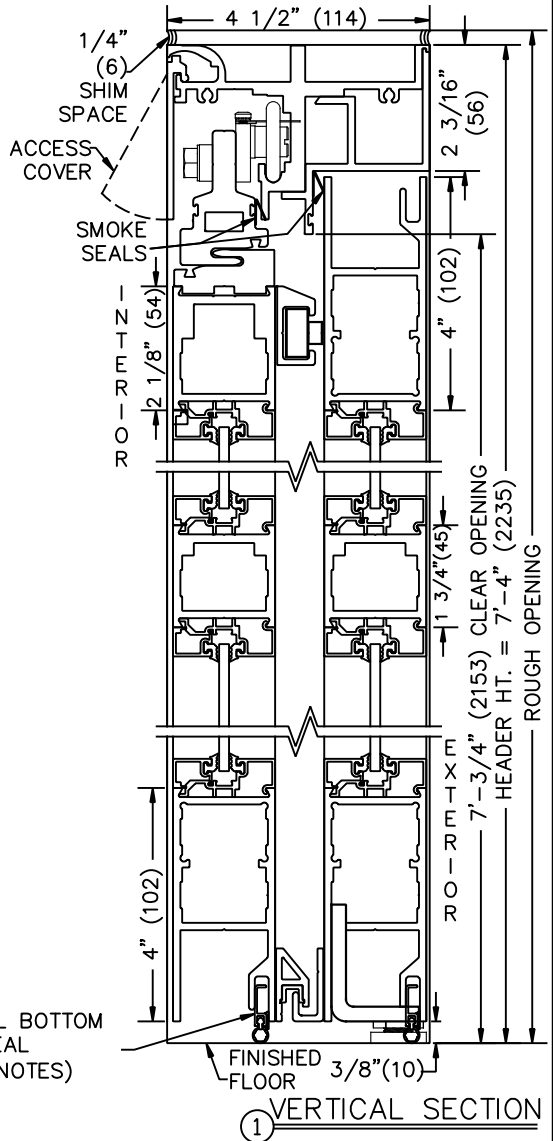


JOB NAME: \_\_\_\_\_ DATE: \_\_\_\_\_

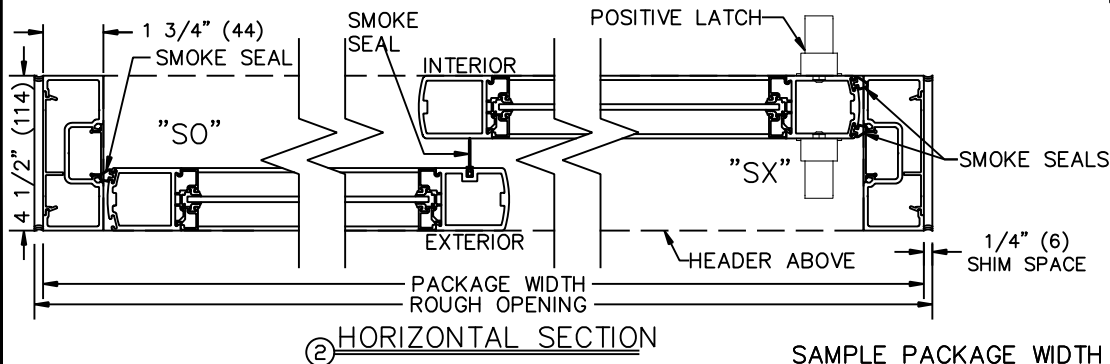
DOOR LOCATION: \_\_\_\_\_ DOOR NO: \_\_\_\_\_ SHEET \_\_\_\_\_ OF \_\_\_\_\_



GROUNDING WIRE  
 BY ELECTRICAL  
 CONTRACTOR



OPTIONAL BOTTOM  
 SEAL  
 (SEE NOTES)



SAMPLE PACKAGE WIDTH INFORMATION

PKG. WIDTH	NOMINAL CLEAR DOOR OPENING	SX PANEL NOM. WIDTH	SO PANEL NOM. WIDTH	EMERGENCY BREAKOUT NOM. WIDTH
7'-0" (2134)	35" (889)	44 1/2" (1130)	38 1/2" (978)	76" (1930)
8'-0" (2438)	41" (1041)	50 1/2" (1283)	44 1/2" (1130)	88" (2235)
9'-0" (2743)	47" (1194)	56 1/2" (1435)	50 1/2" (1283)	100" (2540)

- NOTES:  
 1. DETAILS NOT TO SCALE.  
 2. DOOR PACKAGES ARE INDIVIDUALLY ENGINEERED TO FIT YOUR JOB REQUIREMENTS.  
 3. UNIT MAXIMUM HEIGHT 96" (2438) x MAXIMUM WIDTH 108" (2743)  
 4. OPTIONAL BOTTOM SEAL - REQUIRED WHERE POSITIVE PRESSURE IS USED TO CONTROL THE MOVEMENT OF SMOKE